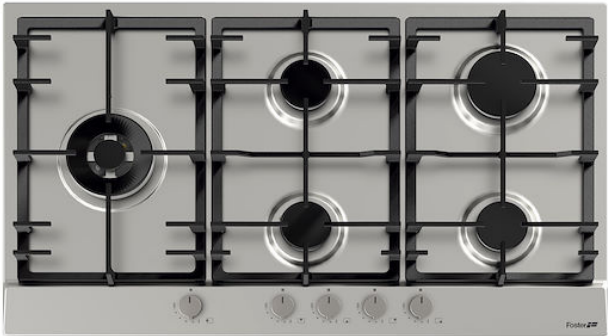


Cooker hob Power



Gas hobs
Code: 7016 032



DETAILS

Edge/Installation Type	Standard (8 mm Edge)
Finish	Foster brushed
Material	AISI 304 stainless steel
Texture	Brushed in line
Supply	220-240 V; 50/60 Hz
Base	90 cm
Dimensions	860x500 mm
Heating element	Five burners
Built-in hole	840 x 480 mm

Grids	Cast iron grids and enamelled burner covers
-------	---------------------------------------------

Width	86 cm
-------	-------

Total power	11.700 W
-------------	----------

Auxiliary	1.400 W (reduced)
-----------	-------------------

Semirapid	2x1.750 W
-----------	-----------

Rapid	2.800 W
-------	---------

Double crown	4.000 W
--------------	---------

Safety	Safety valve with quick-acting thermocouple
--------	---------------------------------------------

Ignition	Electric ignition under knob
----------	------------------------------

Gas type	Tested for installation with natural gas, LPG nozzle set included.
----------	--------------------------------------------------------------------

Type	Gas Hob
------	---------

FEATURES

Cast iron grids	Cast-iron is the ideal material for an hob grid, this due to the manifold properties characterising it: high heat capacity that improves cooking performance; high weight and stability that improve safety; sturdiness that preserves the hob's original aspect over time; easy cleaning.
-----------------	--------------------------------------------------------------------------------------------------------------------------------------------------------------------------------------------------------------------------------------------------------------------------------------------

Safe cooking	All Foster cooker hobs are equipped with safety valves. They shut off the gas supply very quickly if the flame accidentally goes out.
--------------	---------------------------------------------------------------------------------------------------------------------------------------

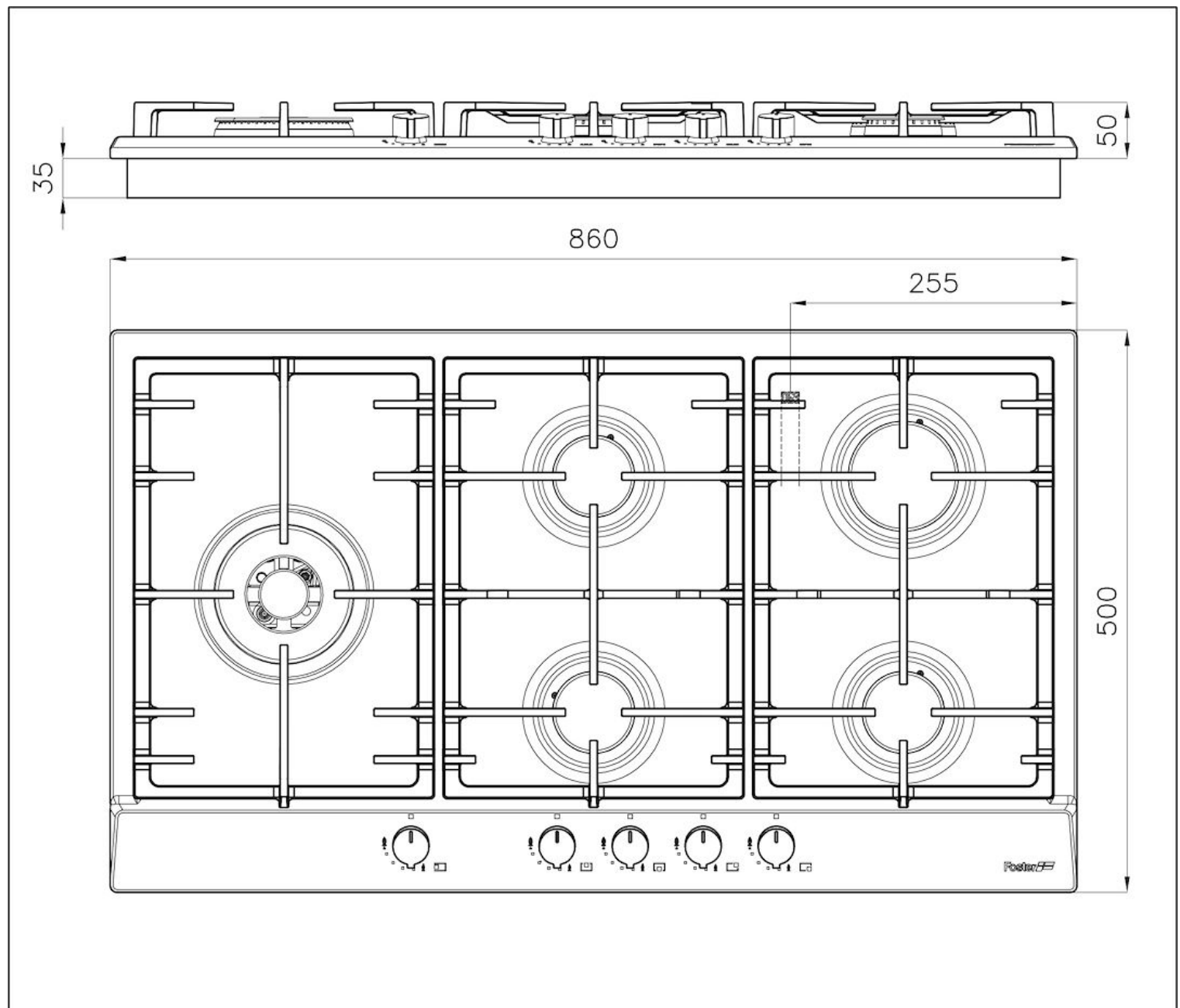
Special burners

Many Foster hobs are equipped with special burners, with two or three rings of fire that greatly increase the power delivered and the heated surface. In the DUAL models the two fire crowns also have independent ignition, making these burners perfect for both intensive and delicate cooking.

Under-knob ignition

The utmost freedom of movement with electronic under-knob ignition, a common feature of all models that allows a one-hand ignition of the burner.

TECHNICAL DATA



GALLERY

